

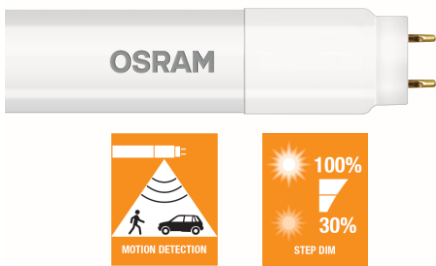
LED星亮+ 运动感应灯管

LED STAR+ MOTION SENSOR TUBE

ST8S-0.6M 8W

ST8S-1.2M 16W

产品技术规格



产品技术特征

- 220V~240V, 50/60Hz 输入
- 1:1替换使用CCG镇流器的传统荧光灯 (2ft及4ft)
- 可在 AC 230V线电压直入的系统中工作
- 玻璃灯体, 防止弯曲
- 高色彩一致性
- RoHS, 无汞
- 可在环境温度 -20 ~ 45° C 之间使用
- 100 lm/W
- 相比传统荧光灯可节能70%以上, 投资回报比高
- 瞬时可达100%光输出且无闪烁
- 2 年质保

应用场所

- 停车场、楼梯、廊道过道、仓库

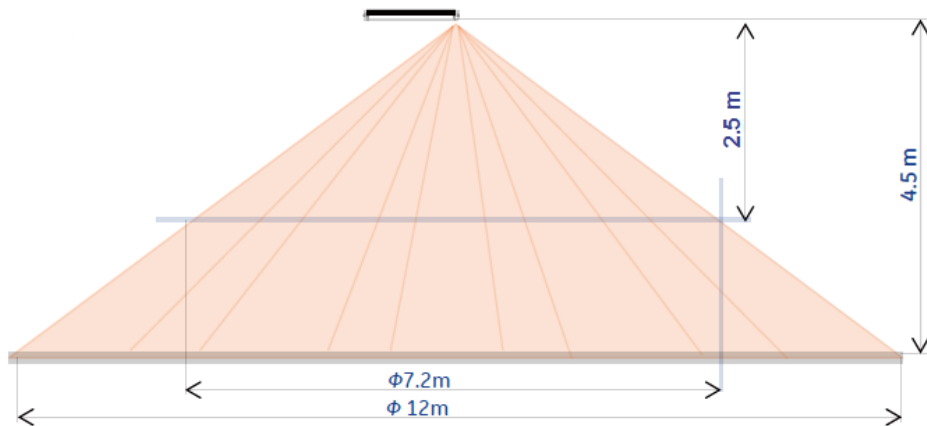
电气及光学规格 (额定值)

	电压 [V]	频率 [Hz]	功率 (100%) [W]	光通量 (100%) [lm]	色温 [K]	功率 因数	显色 指数 (Ra)
ST8S-0.6M 8W/840	220-240	50/60	8	800	4000	>0.9	>80
ST8S-0.6M 8W/865	220-240	50/60	8	800	6500	>0.9	>80
ST8S-1.2M 16W/840	220-240	50/60	16	1600	4000	>0.9	>80
ST8S-1.2M 16W/865	220-240	50/60	16	1600	6500	>0.9	>80

1. All technical parameters apply to the entire lamp. Because of the complex manufacturing process for light-emitting diodes (LEDs), the specified typical values for LED technical parameters represent only purely statistical variables. They do not necessarily correspond to the actual technical parameters for each individual product which can deviate from the typical value. For parameter of Lumen and Watt, production control tolerance with $\pm 10\%$ in delivery.
2. The average lifetime of LED lamps is defined as the number of hours when the light output of 50% of a large group of identical lamps goes below 70% of its initial luminous flux (L70B50, IEC62612). The lifetime is estimated at room temperature (25° C), free air burning, base up burning position and at rated voltage.

运动感应技术说明及应用指南

1. 两段式调光	1) 感应到运动后100%光输出	2) 无可感应运动后30秒自动切换到30%光输出
2. 有效探测范围	感应高度: 2.5m ~ 4.5m	感应直径: 7.2m ~ 12m
3. 探测运动速度	>1.0m/s	

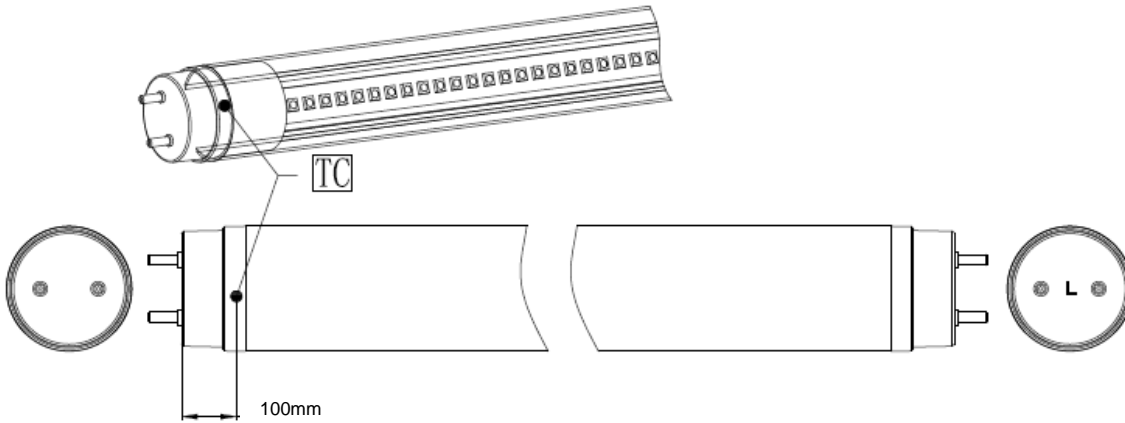


- 内置运动感应器(微波感应器) 安装在灯管贴有标签的一端（驱动端），安装时请务必注意不要覆盖探测端且感应探头应保持方向向下；
- 请避免在电磁环境复杂的场所安装使用，以避免可能的误操作
- 请避免在运动环境复杂的场所安装使用（如风扇背后），以避免可能的误操作
- 推荐灯管的安装间距大于6M

**Minimum /
Maximum
ratings**

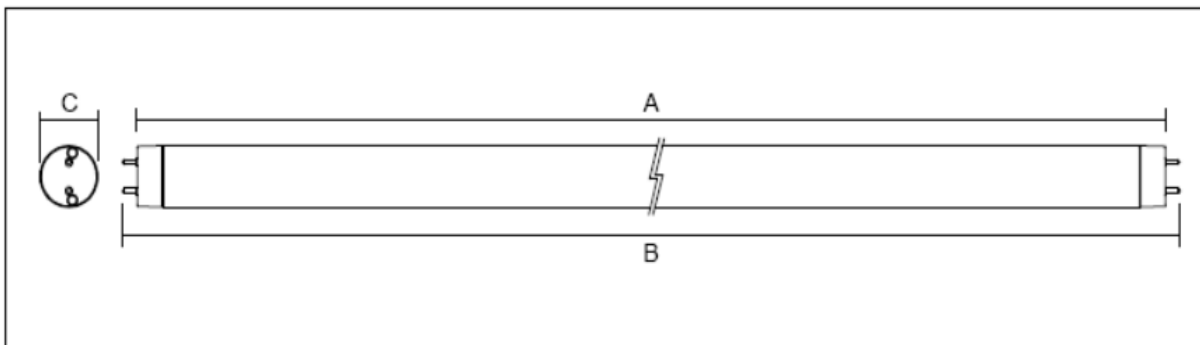
Ambient temperature Ta Maximum temperature Tc Storage temperature Ts [C°]

ST8S-0.6M	-10~45°C	<75 °C	-20°... 80°C
ST8S-1.2M	-10~45°C	<75 °C	-20°... 80°C



Drawings

	B (mm)	C (mm)	Net Weight (g)
ST8S-0.6M	<604	<28	<500
ST8S-1.2M	<1213.6	<28	<500



Safety and Application notes

- The LED STAR+ MOTION SENSOR TUBE must not be damaged or operated in a damaged condition.
- When operating with CCG,



Lamp not suitable for emergency operation



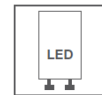
Lamp suitable for 50Hz or 60Hz operation



Dimming not allowed



Lamp to be used in dry conditions or in a luminaire that provides protection



LED replacement starter

- **Do not use LED STAR+ MOTION SENSOR TUBE in ECG luminaire !**
- When operating with CCG (magnetic ballast), SubstiTUBE® Starter has to be inserted to replace the conventional fluorescent lamp starter. If the conventional starter is not replaced, the LED STAR+ MOTION SENSOR TUBE will start blinking and be damaged!
- Do not use LED STAR+ MOTION SENSOR TUBE in luminaires which do not have any conventional starter or whereby the conventional starter cannot be replaced. Otherwise, rewiring is needed.
- Not suitable for luminaires with serial lamp connection i.e. more than one tube at one magnetic ballast.
- LED STAR+ MOTION SENSOR TUBE **can be operated in AC 230V**. In order to grant a safe operation mode please refer to the installation instructions for further information
- The LED STAR+ MOTION SENSOR TUBE emits light only with a limited angle, not like a fluorescent tube with 360° output.
- Due to the characteristic light distribution of the LED STAR+ MOTION SENSOR TUBE, the resulting luminaire light characteristic is likely to change. It is not guaranteed that e.g. standards for lighting at working places will be complied to after replacement. A photometric check of the installation is recommended.
- The effective energy savings depend on the efficiency of the luminaire setup to be replaced and should be considered individually in each case.
- The LED STAR+ MOTION SENSOR TUBE is protected according to IP20. Applications with external risk of moisture and dust can be served with an adequately protected luminaire.
- LED STAR+ MOTION SENSOR TUBE differ in their diameters and geometries from fluorescent lamps. Their use in open batten luminaires with gaskets is possible if no excessive force is expended during the fixing. Obtaining the necessary IP protection in open batten luminaires with gaskets cannot be ensured.
- The built-in motion sensor is installed in one end of the tube (with product label). It should avoid be covered by metal parts and direction down.
- Install in places far away from magnetic field to avoid wrong function.
- Install in places far away from moving objects (such as fans, etc.) to avoid wrong function.
- Recommended installation distant between tubes is >6 meter
- Photobiological Safety of lamps and lamp systems according to IEC 62471. Risk Group: Exempt

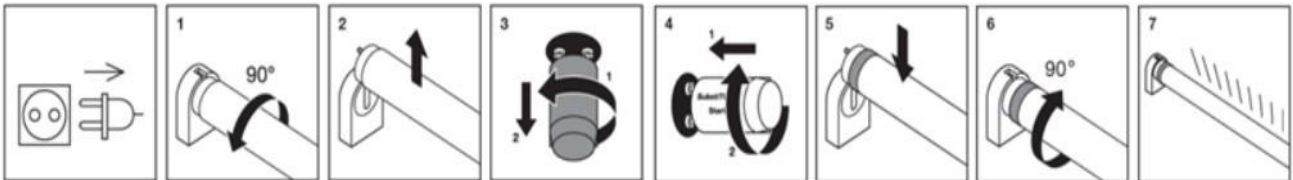
Installation Guide

1) Retrofitting a CCG luminaire accord. to EN 62776

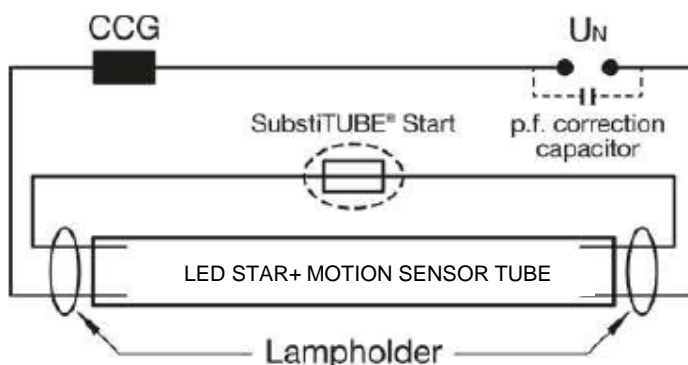
Replacing fluorescent T8-tube and installed starter by LED STAR+ MOTION SENSOR TUBE and SubstiTUBE® Starter

Below an example for typical lamp holder types

- ✓ Please ensure that the voltage supply is disconnected.
- ✓ Carefully remove the fluorescent tube and conventional starter according to the lamp holder type
- ✓ Insert LED STAR+ MOTION SENSOR TUBE and SubstiTUBE® Starter properly.



- Turn the conventional lamp 90° and take it out of the socket.
- Remove the conventional starter by turning it.
- Insert and latch the SubstiTUBE® Starter into starter socket.
- Insert LED STAR+ MOTION SENSOR TUBE into socket and locate into position by turning 90°.
- Check light .emission direction



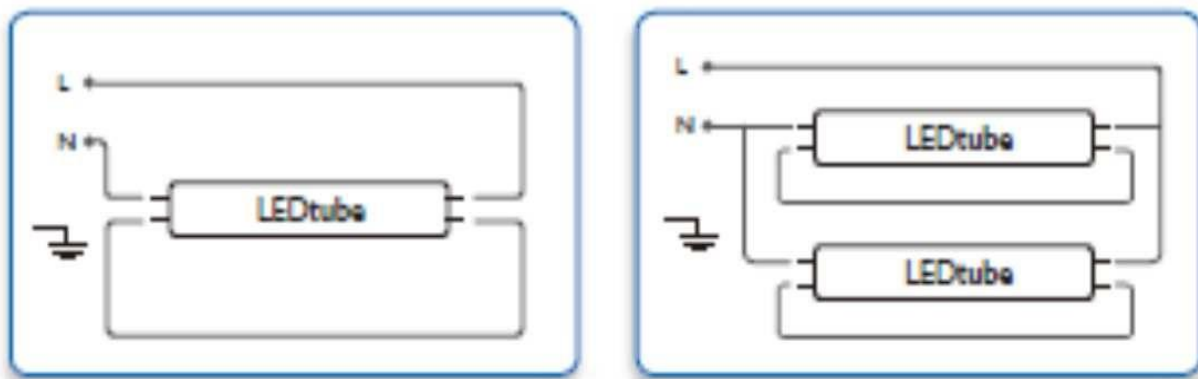
Circuit diagram of a retrofitted CCG luminaire

Installation Guide

2) Installation directly on line voltage

LED STAR+ MOTION SENSOR TUBE may also be driven directly on line voltage. **Please check the L/N markings on the LED tube.** In order to grant a safe operation mode please refer to the installation instructions for further information. Installation must be done by qualified Electricians and all security described should be strictly followed.

Diagram show on below is the reference rewiring for one lamp and repeat same wiring for multiple tubes



3) Installation of an ECG luminaire with EM tube

LED STAR+ MOTION SENSOR TUBE is not for use with ECG (electronic control gear). Rewiring of the luminaire is necessary for replacing fluorescent tube by LED STAR+ MOTION SENSOR TUBE in ECG luminaires. Installation must be done by qualified Electricians and all security described should be strictly followed.

Ordering Guide

Product	EAN-10*	EAN-40**	S-Unit***
ST8S-0.6M 8W/840 230V EM 25X1 APM OSRAM	4058075067011	4058075067028	25X1
ST8S-0.6M 8W/865 230V EM 25X1 APM OSRAM	4058075055599	4058075055605	25X1
ST8S-1.2M 16W/840 230V EM 25X1 APM OSRAM	4058075067035	4058075067042	25X1
ST8S-1.2M 16W/865 230V EM 25X1 APM OSRAM	4058075055612	4058075055629	25X1

* ENA-10: ordering code for single unit

** ENA-40: ordering code for shipping unit

*** S-Unit: Lamps per shipping unit

Sales and Technical Support

Sales and technical support is given by the local LEDVANCE subsidiaries.

On our worldwide homepage all LEDVANCE subsidiaries are listed with complete address and phone numbers.

WWW.ledvance.com

WWW.osram-lamps.com/substitute

LEDVANCE GmbH

Head Office:

Parkring 33, 85748
Garching/Munich
Germany

Any update of data in this datasheet
will not be informed
Please contact LEDVANCE Lighting
for detailed information